



Intermarine's Century Class Vessels

Industrial Century, Ocean Atlas, Ocean Titan,
Industrial Charger, Industrial Champ,
Industrial Cape, Ocean Crescent

Year of Build: 2000 (Ocean Atlas, Ocean Titan, Charger)
2001 (Champ, Cape, Century)
2002 (Ocean Crescent)

Flag: Antigua (Charger, Champ, Century, Cape)
United States (Ocean Atlas, Titan, Charger, and Crescent)

Type: Heavy-Lift, Box-Hold, Multipurpose Vessel
Class: Germanischer Lloyd GL + 100 A5 "E" G – equipped for carriage of containers – SOLAS II-2. Reg. 54 + MC AUT "E"

Service Speed: 16.5 Knots
LOA: 119.80 M
Beam: 20.00 M
Draught: 7.715 M
DWAT: 8,000 MT
GRT/NRT: 7252 / 2754
Holds / Hatches: 3 Holds/3 Hatches
Grain/Bale capacity: About 395,000 cuft
Free height in holds: 12.00 M
Hold ventilation: 6 renewals per hour basis empty hold

Adjustable Tweendecks: Yes – 3 positions
Longest hold/hatch: Tweendeck pontoons can be configured to provide one long unobstructed cargo hold with one weather deck hatch opening of about 71M x 15.8M.

Cargo Gear: Two electro-hydraulic cranes with the following capacities:
Crane one: Heavy Lift 200 MT (between No. 1 + 2 Hold at Portside)
Crane two: Heavy Lift 200 MT (between No. 2 + 3 Hold at Portside)
Cranes Combinable for 400MT SWL

Hatch Covers:

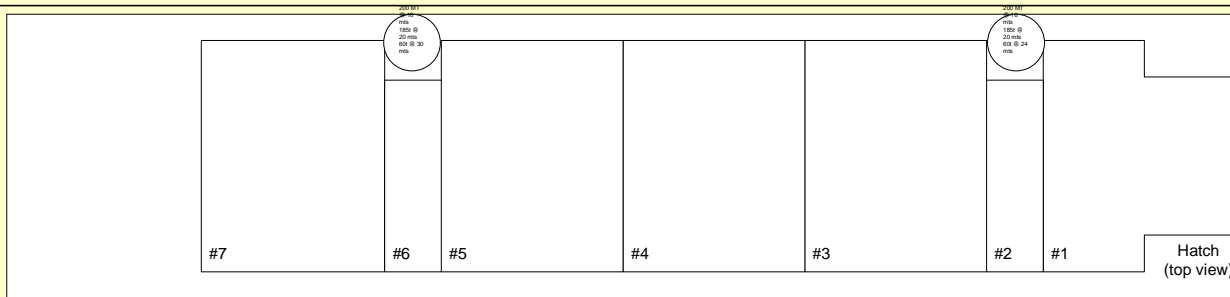
	Hatch One: 16.85M x 10.6M / 15.8M:	2 panels
	Hatch Two: 42.42M x 15.8M:	4 panels
	Hatch Three: 12.47M x 15.8M:	1 panel

Container Intake: Number of 20' containers (8.5' in height)

	In Hold:	204
	<u>On Deck:</u>	<u>302</u>
	Total:	506

Reefer: The vessel has 80 reefer plugs of 12kw capacity.

All details about and without guarantee.



CENTURY CLASS VESSELS

- Particulars:
- LOA : 119.8 mts
 - Breadth : 20.00 mts
 - Draft : 7.7 mts
 - DWT : 8034 MT
 - Bale : 11,597.52 m3
 - CR : 2x200MT
 - Deck : 302 TEU
 - Under deck: 214 TEU
- ~ Square Meters:
- HC - 1083 m2
 - TD - 1083 m2
 - TT - 910 m2

- Uniform Deck Strength:
- TT - 15 MT/m2
 - TD - 3.5 MT/m2
 - HC - 2.5 MT/m2

