



## M/V Ocean - Atlas, Titan, Charger, and Crescent

Year of Build: 2000 (Atlas, Titan, and Charger) 2002 (Crescent)  
Flag: **United States**  
Type: Heavy-Lift, Box-Hold, Multipurpose Vessel  
Class: Germanischer Lloyd GL + 100 A5 "E" G – equipped for carriage of containers – SOLAS II-2. Reg. 54 + MC AUT "E"

Service Speed: 16.5 Knots  
LOA: 119.80 M  
Beam: 20.00 M  
Draught: 7.715 M  
DWAT: 8,000 MT  
GRT/NRT: 7252 / 2754  
Holds / Hatches: 3 Holds/3 Hatches  
Grain/Bale capacity: About 11,500 cbm  
Free height in holds: 12.00 M  
Hold ventilation: 6 renewals per hour basis empty hold

Adjustable Tweendecks: Yes – 3 positions  
Longest hold/hatch: Tweendeck pontoons can be configured to provide one long unobstructed cargo hold with one weather deck hatch opening of about 71M x 15.8M.

Cargo Gear: Two electro-hydraulic cranes with the following capacities:  
Crane one: Heavy Lift 200 MT (between No. 1 + 2 Hold at Portside)  
Crane two: Heavy Lift 200 MT (between No. 2 + 3 Hold at Portside)  
Cranes Combinable for 400MT SWL

Hatch Covers: Hatch One: 16.85M x 10.6M / 15.8M: 2 panels  
Hatch Two: 42.42M x 15.8M: 4 panels  
Hatch Three: 12.47M x 15.8M: 1 panel

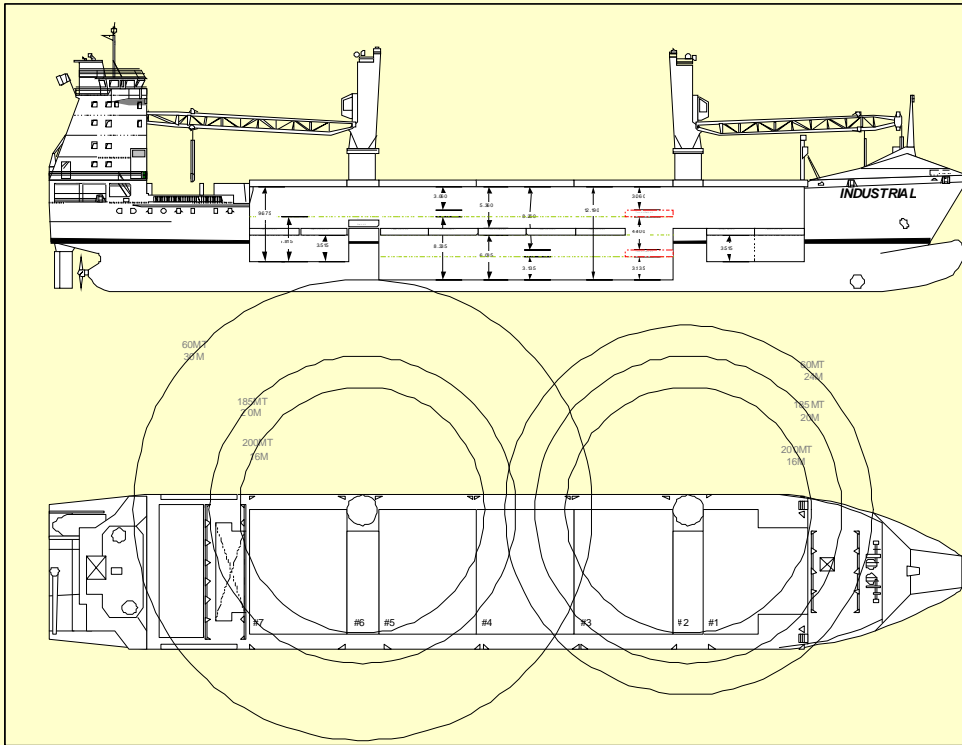
Container Intake: Number of 20' containers (8.5' in height)

In Hold:	204
On Deck:	302
Total:	506

Reefer: The vessel has 80 reefer plugs of 12kw capacity.

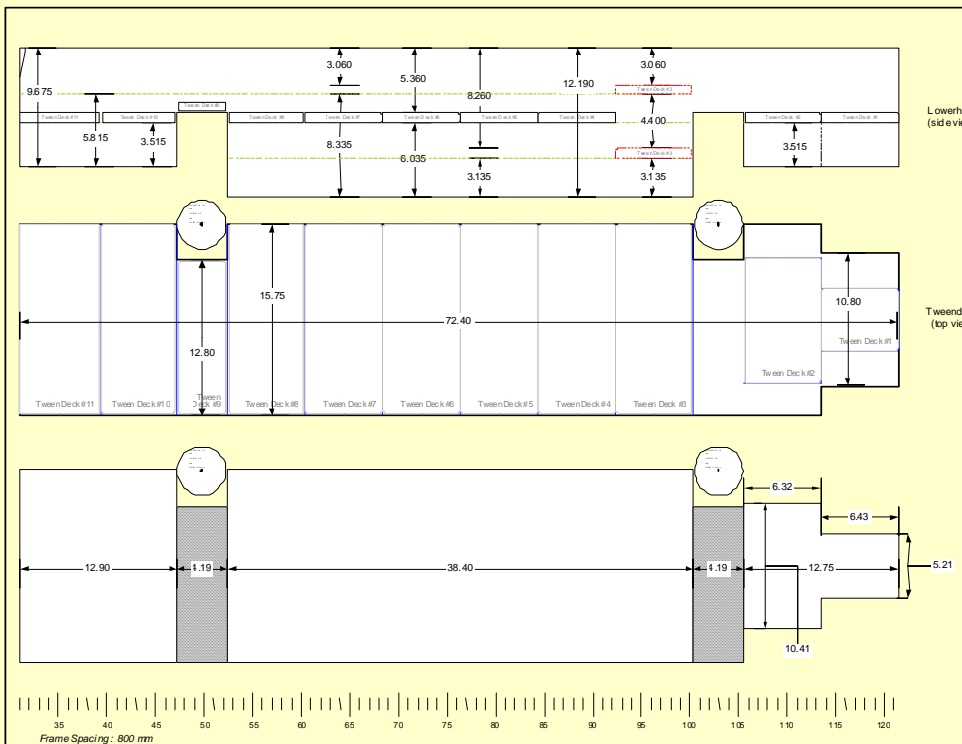
All details about and without guarantee.





Ocean Atlas/Titan/Charger/Crescent

- Particulars:
- FLAG : USA
  - LOA : 119.8 mts
  - Breadth: 20.00 mts
  - Draft : 7.715mts
  - DWT : 8000 MT
  - Bale : 11,597.52 m3
  - CR : 2x200MT
  - Deck : 302 TEU
  - Under deck: 204 TEU
- Uniform Deck Strength:
- HC - 2.5 MT/m2
  - TD - 3.5 MT/m2
  - TT - 15 MT/m2
- Approximate Square Footage:
- HC - 11663-ft2
  - TD - 11663-ft2
  - TT - 09793-ft2
  - Total 33119-ft2



Ocean Atlas/Titan/Charger/Crescent

- Particulars:
- FLAG : USA
  - LOA : 119.8 mts
  - Breadth: 20.00 mts
  - Draft : 7.715 mts
  - DWT : 8000 MT
  - Bale : 11,597.52 m3
  - CR : 2x200MT
  - Deck : 302 TEU
  - Under deck: 204 TEU
- Uniform Deck Strength:
- HC - 2.5 MT/m2
  - TD - 3.5 MT/m2
  - TT - 15 MT/m2
- Approximate Square Footage:
- HC - 11663-ft2
  - TD - 11663-ft2
  - TT - 09793-ft2
  - Total 33119-ft2