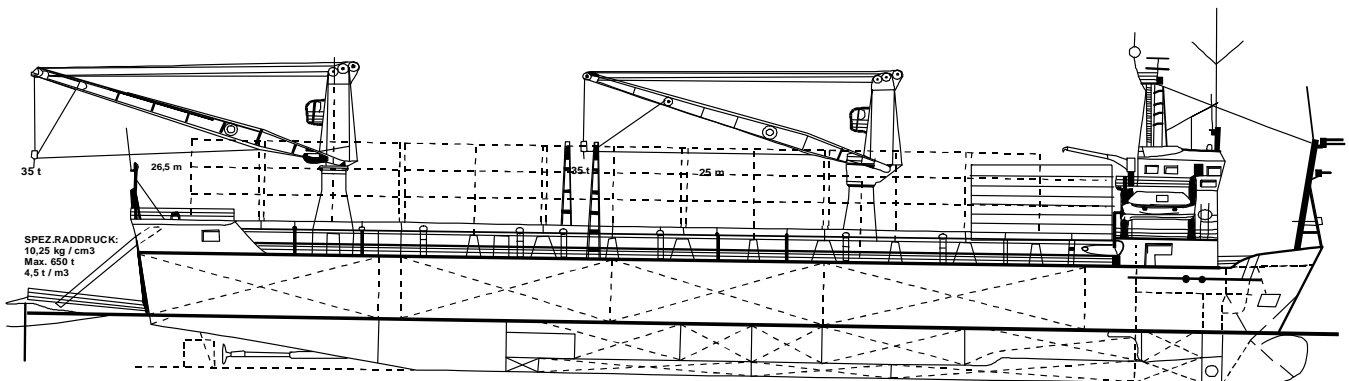


MV Industrial Achiever (ex Ostara)

Type:	Roro/Lolo/Container/Dockcarrier/Freedeecker		
Built:	1983		
Flag:	Dutch Antilles		
Call Sign:	PJPU		
DWAT:	Abt. 4400 ton		
Draft:	Abt . 4,86 M		
Class:	Class: G.L. +100 A 4 E1 + MC E1 AUT equipped for carriage of containers grainfitted		
GRT/NRT:	1.599 / 828,15		
CT/NT:	6.950 / 2.085,00		
Suez GRT/NRT:	6.845,78 / 6.043,19		
Panama GRT/NRT:	6.929,50 / 5.958,00		
LOA:	106,00 M		
LPP :	95,60 M		
Beam:	19,60 M		
Depth:	5,01 m / 10,90 m		
Holds / hatches:	1 double skinned hold (boxtype)		
Hold :	86,65 m * 15,00 m * 8,00 m		
Hatch :	86,55 m * 15,00 m hydraulic operated Hatchcover		
Grain/bale:	Abt 374,815 cbft / 373,177 cbft bale		
Tweendeck:	vessel has 6 tweendeck panels, total 16 m length which either can be placed or used for erecting bulkheads, this reduces the intake by 12 TEU stowed latitudinal under deck Vessel can also trade with completely open hatch and no height limitation even when passing ramp		
Gear:	2 electr/hydraulic turning cranes of 40 t SWL combinable to 80/70 tons, mounted on portside		
Crane 1:	40 tons at 21,5 m decreasing to 35 tons at 25 m outreach		
Crane 2:	40 tons at 23,0 m decreasing to 35 tons at 26 m outreach		
Sternramp:	dimensions : 13,00 m * 11,50 m + 2,00 m flaps weights upto 650 t (4.3 t / m ²) 430 lane meters under deck for 35 trailers		
Flo/flo:	3 Euro-barges of 24,00 m * 9,50 m * 6,20 can be loaded under deck by float in operations		
Container intake:	438	TEU	20' * 8' * 8,6'
Stowage hold:	228	TEU	76/76/76 - 1 st /2 nd /3 rd tier
Deck:	210	TEU	75/75/60 - 1 st /2 nd /3 rd tier
Alternatively:	193	FEU	40' * 8' * 8,6'
Stowage hold:	102	FEU	+ 24 TEU

- Deck:** 91 FEU + 28 TEU
intake always subject to vessel's stability / trim and permissible weight.
- Container stow:** vessel can stow 20' TEU atwarthship in hold to allow loading and discharging of same via the sternramp with forklifts
20 reefer points (female) on deck
- Deck / hatch strength:**
Tanktop: 14 tons/sqm, stackload 60/90 tons per 20'/40' stack
Hatchcovers: Stackload 25/40 tons per 20'/40' stack
Tweendeck: 2 tons/sqm
- Hold ventilation: 20 airchanges per hour bss empty holds
- Speed / Consumption:**
At Sea: Abt. 11.5kts on abt 12.5tons IFO 180 cst RME 25
Port Consumption: .8 ton gasoil when idlw
2.5 tons gasoil per 24 hrs both cranes working
Main engine uses gasoil during in-port maneuvering,
Entering and leaving ports/locks and during navigation in
Difficult waters.
- Shaft Gen.: 438KVA in heavy weather shaft gen. Might be disconnected
In which case then sea consumption is .8 tons gasoil.
- Main Engine: 2 x MAK 6M 453, 1800KW/600rpm coupled to
2 reduction gear and variable pitch propellers.
- Auxiliaries: 2 x Deutz BA 8M 816, 398 KVA each
1 x Deutz BA 6M 816, 295 KVA
- Bowthruster: 300 KW
Ballast capacity: 7,180 cbm
Bunker capacity: 530cbm IFO 180 cst
60 cbm MGO
Freshwater cap: 100cbm
Luboil capacity: 45 cbm

Vessel is fitted with modern navigational equipment and SATURN C



All details "abt" and without guarantee